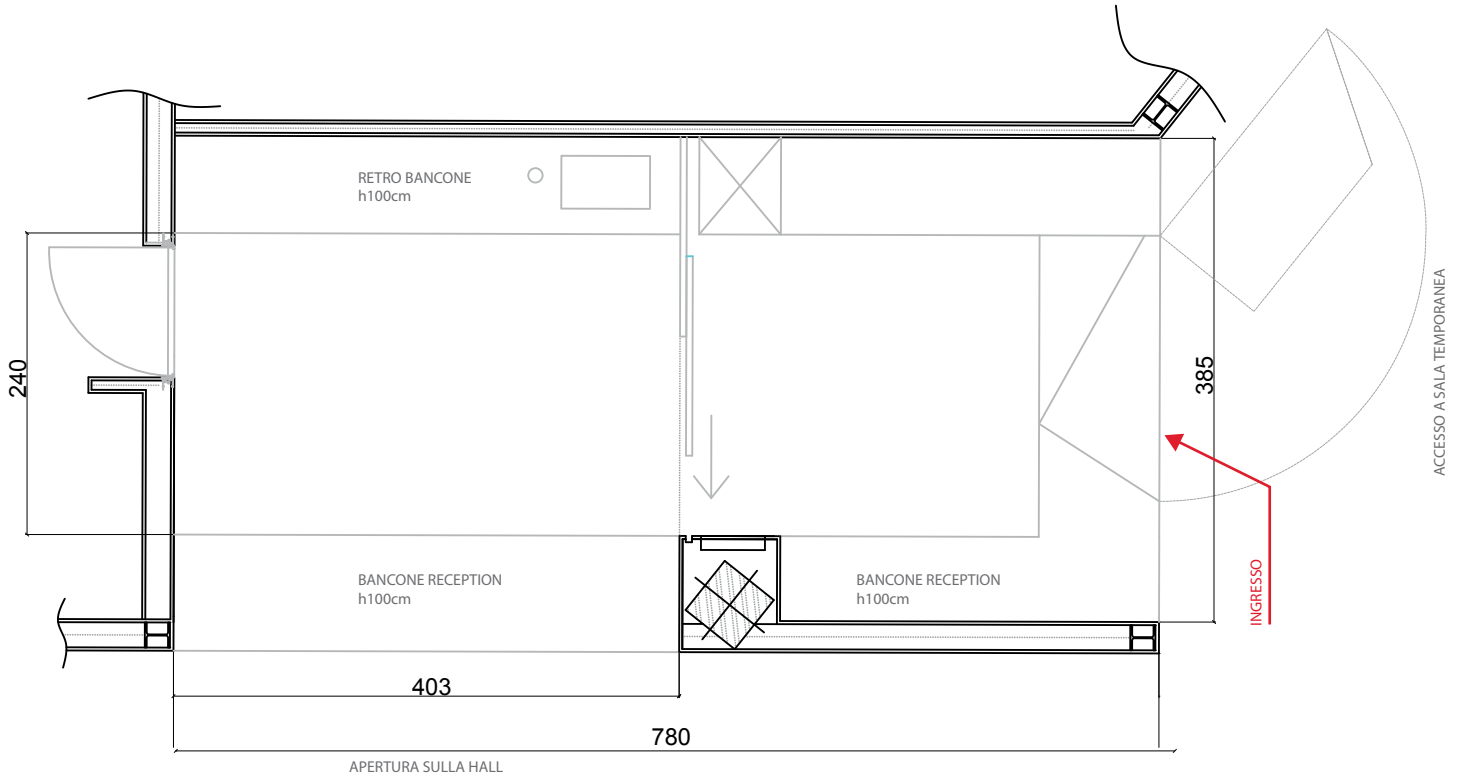


location:

## RECEPTION



### DETTAGLI TECNICI:

- Dimensioni: 7,8 x 3,85 m - h 3.60 m
- Superficie (al lordo degli arredi): 30,5 m<sup>2</sup>
- Dotazione : \_Grucce e stender per 200 capi

### TECHNICAL DETAILS:

- Dimensions: 7.8m x 3.85m - h. 3.6m
- Surface area (including furnishings): 30.5m<sup>2</sup>
- Fittings: \_Hangers and rails for 200 items